

Detour Information

Stage 1 Detour: Starting May 28, 2019, Sleepy Hollow Road will be closed between Haverford Drive and Longmeadow Parkway (local traffic only). Thru-traffic will be detoured to Randall Road (via County Line Road and Longmeadow Parkway). Local access points to residential neighborhoods include:

- Barrett Drive at Longmeadow Parkway (*Willoughby Farms South Unit 1*)
- Foster Circle at Sleepy Hollow Road (*Stone Ridge Units 1 – 2, Westfield Community School*)
- Haverford Drive at Sleepy Hollow Road (*Willoughby Farms Units 1 – 19*)
- White Chapel Lane at Longmeadow Parkway (*Creeks Crossing and Willoughby Farms Units 20 – 23*)

Drivers in this project area should be prepared to reduce their speed, exercise caution, watch for construction workers and construction vehicles entering or leaving the site, and obey flaggers and other traffic control devices within the work zone.

Project Information

Road rehabilitation work will be occurring on Sleepy Hollow Road in Algonquin from County Line Road south to the Village limits (north of Grandview Drive). The project consists of the removal of the existing roadway system, upgrades to the storm sewer, reinstallation of curb and gutter, base stabilization of roadway, surface installation of roadway, boardwalk structure at Creeks Crossing Park, sidewalk and pathway rehabilitation, intersection lighting, and restoration.

- Stage 1: Sleepy Hollow Road closed from Haverford Drive south to Longmeadow Parkway.
- Stage 2: Two sections of Sleepy Hollow Road closed, one from Haverford Drive north to County Line Road and another from Longmeadow Parkway south to Grandview Drive.

Project Schedule

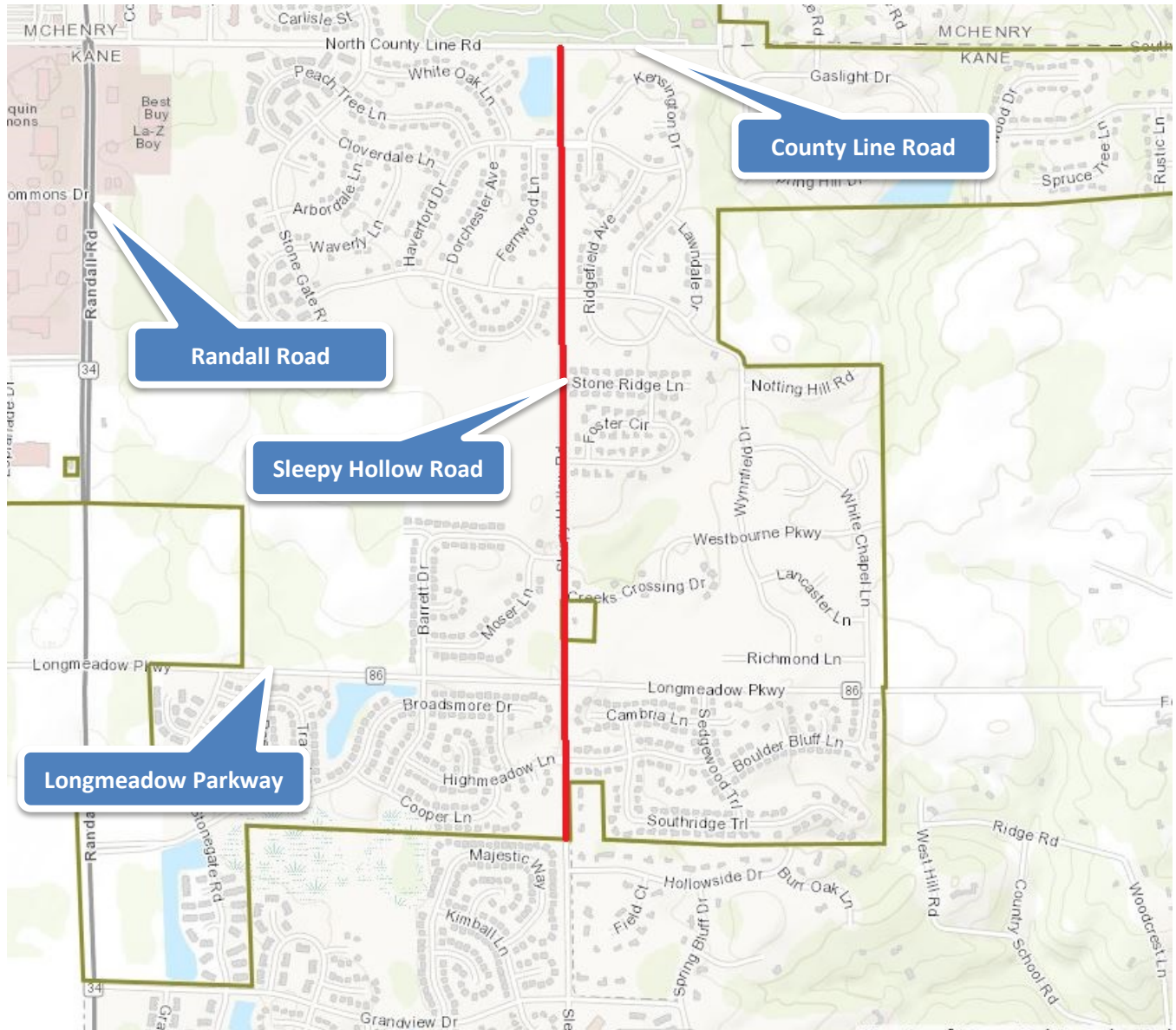
(Weather Permitting)

May 28, 2019: Stage 1 Start

August 2019: Scheduled Stage 1 Completion/Stage 2 Start

November 2019: Scheduled Completion

Project Map



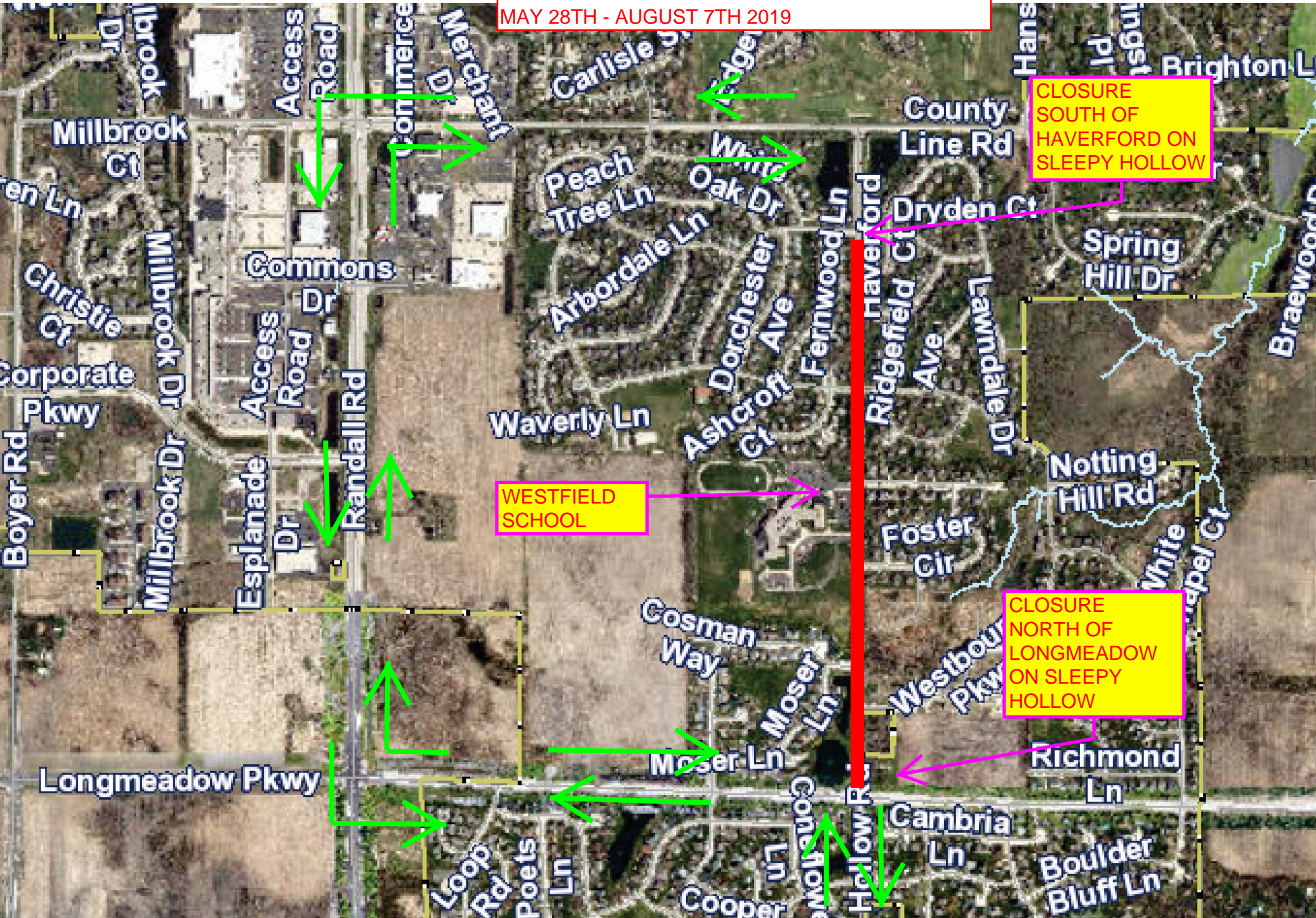
Contact Information

Village of Algonquin

847-658-2700

[Contact Online](#)

**SLEEPY HOLLOW ROAD - CLOSURE FOR STAGE 1
MAY 28TH - AUGUST 7TH 2019**



**CLOSURE
SOUTH OF
HAVERFORD ON
SLEEPY HOLLOW**

**WESTFIELD
SCHOOL**

**CLOSURE
NORTH OF
LONGMEADOW
ON SLEEPY
HOLLOW**