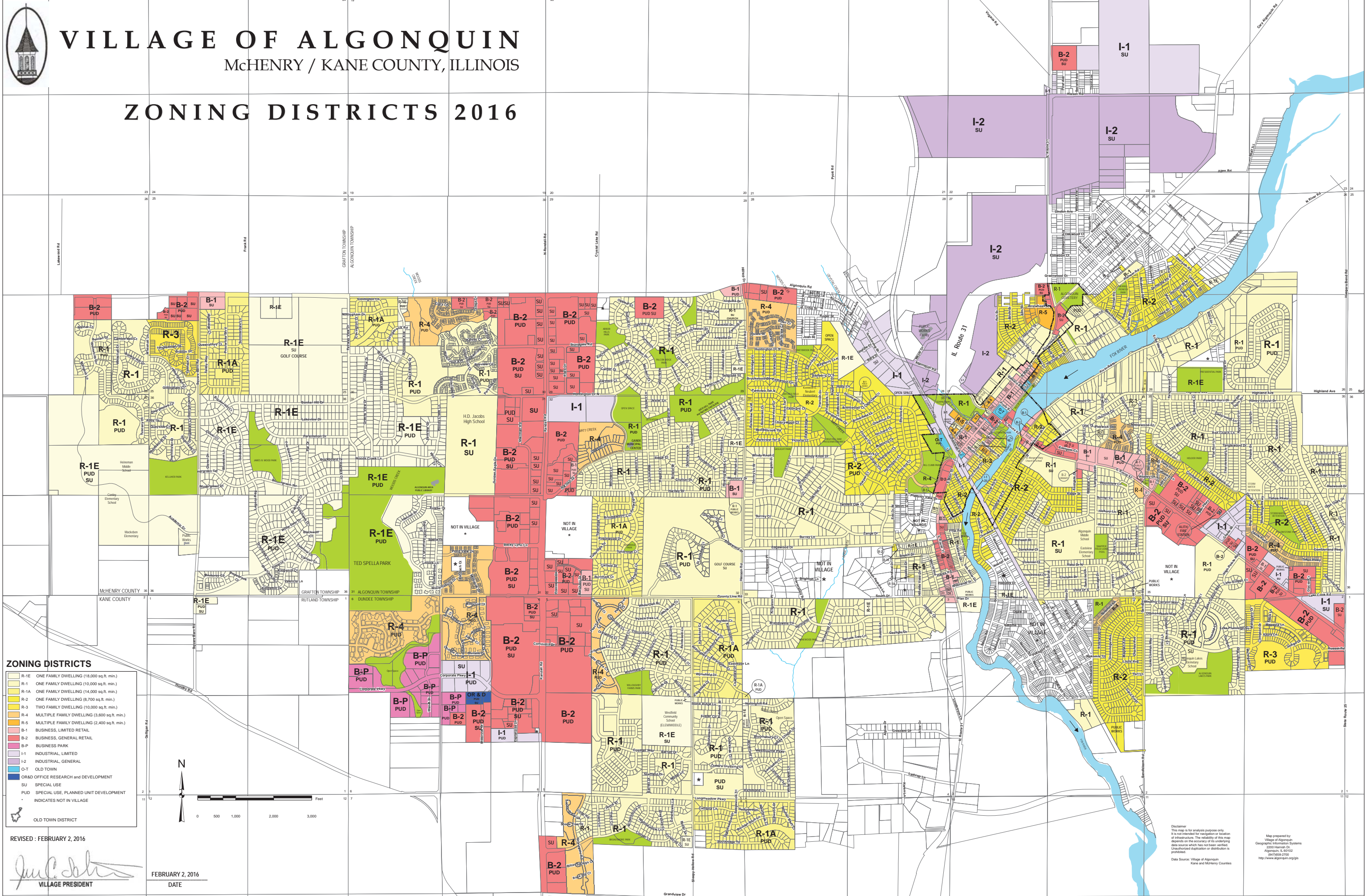




VILLAGE OF ALGONQUIN

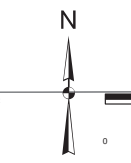
McHENRY / KANE COUNTY, ILLINOIS

ZONING DISTRICTS 2016



ZONING DISTRICTS

- R-1E ONE FAMILY DWELLING (18,000 sq. ft. min.)
- R-1 ONE FAMILY DWELLING (10,000 sq. ft. min.)
- R-1A ONE FAMILY DWELLING (14,000 sq. ft. min.)
- R-2 ONE FAMILY DWELLING (8,700 sq. ft. min.)
- R-3 TWO FAMILY DWELLING (10,000 sq. ft. min.)
- R-4 MULTIPLE FAMILY DWELLING (3,600 sq. ft. min.)
- R-5 MULTIPLE FAMILY DWELLING (2,400 sq. ft. min.)
- B-1 BUSINESS, LIMITED RETAIL
- B-2 BUSINESS, GENERAL RETAIL
- B-P BUSINESS PARK
- I-1 INDUSTRIAL LIMITED
- I-2 INDUSTRIAL GENERAL
- O-T OLD TOWN
- OR&D OFFICE RESEARCH and DEVELOPMENT
- SU SPECIAL USE
- PUD SPECIAL USE, PLANNED UNIT DEVELOPMENT
- * INDICATES NOT IN VILLAGE
- OLD TOWN DISTRICT



REVISED : FEBRUARY 2, 2016

Jul C. John
VILLAGE PRESIDENT

FEBRUARY 2, 2016
DATE

Disclaimer: This map is for analysis purpose only. It is not intended for navigation or location of infrastructure. The reliability of this map depends on the accuracy of its underlying data source which has not been verified. Unintended duplication or distribution is prohibited.

Map prepared by:
Geographic Information Systems
Algonquin, IL 60102
(815) 398-0700
http://www.algonquin.org/gis

Data Source: Village of Algonquin
Kane and McHenry Counties